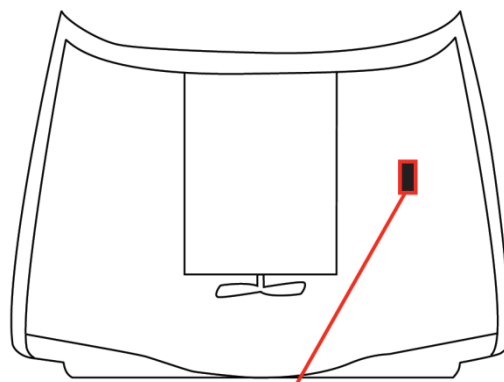




## Pre-Filter Fitting Instructions

Toyota Hilux (All D4D)



### IMPORTANT: Before Starting

- ☐ Ensure the engine bay is clean and free from contaminants.
- ☐ The Fuel Manager unit has arrows which indicate flow located under the ports.
- ☐ Install all fittings and plugs into the filter assembly using a suitable thread paste such as Permatex Thread Sealant 592914.

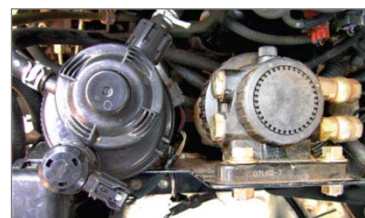
**Kit Part No: FM612DPK**

### INSTRUCTIONS

1. Remove the original filter bracket completely.
2. Remove the other two bolts which are holding brackets on the inner guard.
3. Using the original bolts, mount the new filter bracket in place. DO NOT tighten until all bolts have been installed.
4. Mount the original filter to the new bracket.
5. Mount the Fuel Manager filter unit to the new bracket. The filter unit may be mounted on either side. Beware of an aluminium vacuum pipe on the engine side.
6. Install all fittings and plugs into the filter assembly using a suitable thread paste such as Threebond 1110B. Note the direction of the flow by the arrows located under the ports.
7. Remove the flexible fuel hose from the inlet side of the original filter. Connect the supply hose to the inlet of the Fuel Manager using one of the clamps.
8. Connect the outlet pipe of the Fuel Manager to the inlet pipe of the original filter using the hose and hose clamps provided.
9. Pump the hand primer until it goes firm. The fuel system is now bled and the engine is ready to start.

### KIT CONTENTS

1. Fuel Manager 30 micron Filtration Unit
2. Mounting Bolts, Washers and Nyloc Nuts
3. Spare 30 Micron Replacement Filter
4. 1mtr 3/8" Quality Fuel Hose
5. Direction Plus Filter Bracket
6. 3/8" Straight Barb Fittings
7. Blanking Plugs
8. Hose Clamps



P: (02) 9831-1715 | F: (02) 9671-2212 | E: [enquiries@westernfilters.com.au](mailto:enquiries@westernfilters.com.au) | W: [www.westernfilters.net.au](http://www.westernfilters.net.au) 45 Forge St, Blacktown NSW 2148 | Mon-Fri: 7:00am – 5pm / Sat: 7:00am – 12pm

